



Technical specifications:

- Movable
- Attached to tool (mould) or worktops
- Straight runout for the ejection of parts, for example a conveyor or a container under the tool
- Optional: Baffle to reduce falling speed
- Optional: Pad, easily removable for areas under heavy stress

Benefits:

- Easy fast and variable assembly due to special magnets
- Gentle and safe removal of parts
- Reduction of rejects through the systematic further conveyance of parts onto a conveyor belt or into a container
- Cleaner parts and cleaner machine environment through systematic collection
- Version taking the machine and product composition into account

Number	W1 [mm]	W2 [mm]	L1 [mm]	L2 [mm]	H1 [mm]
300	100	300	100	450	122.300.300.450
330	100	330	100	450	122.330.330.450
400	150	440	150	450	122.400.440.450
500	200	540	200	450	122.500.540.450
600	200	640	200	450	122.600.640.450
700	250	740	250	450	122.700.740.450

Mounting with 4 spacer tubes and magnets (Ø 32 mm) with a total length of 45 mm.

Collecting funnel

- AFTBE, straight
- AFTBE, diagonal
- AFTBE, diagonal, 90° turned
- AFTBE, duo
- AFTBE, duo, 90° turned
- LAFTBE, double wall
- AFT
- AFTD
- LAFT
- AWS

Side safety curtain

- Version 1
- Version 2
- Butterfly curtain
- LAS
- AFR
- Cross bar cover

Inquiry: collecting funnel type AFTBE, straight

Company: _____

Contact person: _____

Street: _____

Phone: _____

ZIP/City: _____

E-mail: _____

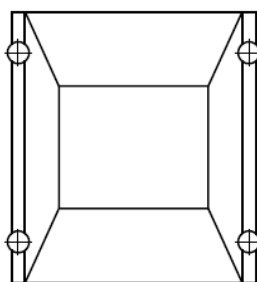
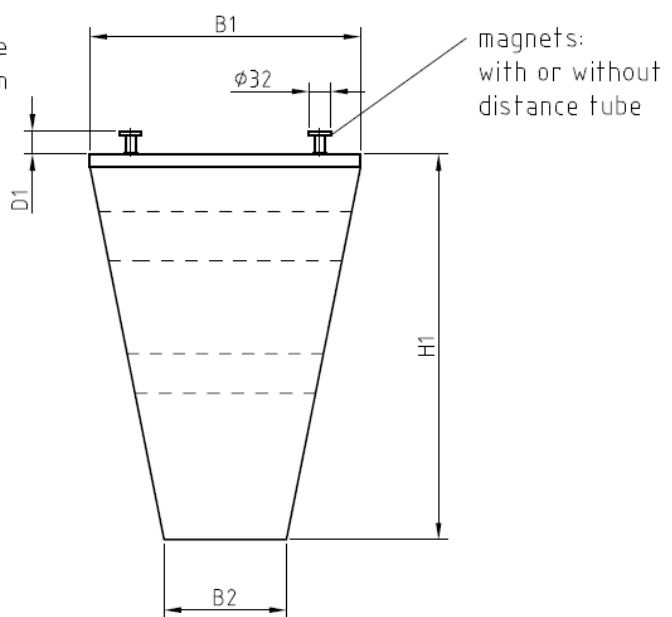
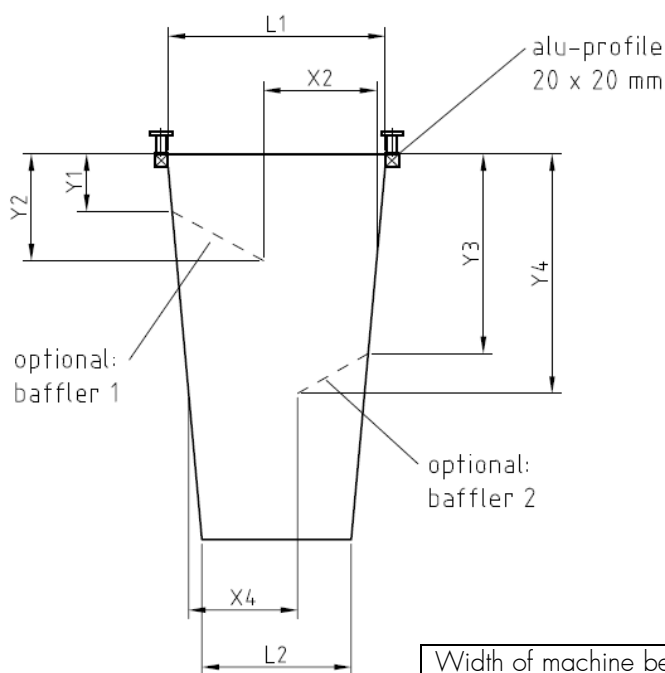
Machine no: _____

Max. product dimensions: _____

Tool no: _____

(L x W x H) in mm

Required quantity: _____ Pieces



Width of machine bed	B1 =	mm
Aperture runout	B2 =	mm
Distance between lower edge tool and upper edge aluminium profile (magnetic height 8 mm)	D1 =	mm
Height top edge of aluminium profile bis runout	H1 =	mm
Maximum mould aperture distance	L1 =	mm
Aperture runout	L2 =	mm

Optional:

Start height baffler 1	Y1 =	mm
End height baffler 1	Y2 =	mm
Aperture at baffler 1	X2 =	mm
Start height baffler 2	Y3 =	mm
End height baffler 2	Y4 =	mm
Aperture at baffler 2	X4 =	mm

Pad (Please mark on diagram)

- Material-Selection: FM100.001 (antistatic) FM100.003 (static blue) FM100.005 (antist. + FDA)
 FM100.002 (static silver) FM100.004 (Kevlar) FM100.006 (Glamux)

Collecting funnel

- AFTBE, straight
- AFTBE, diagonal
- AFTBE, diagonal,
90° turned
- AFTBE, duo
- AFTBE, duo, 90° turned

LAFTBE, double wall

- AFT
- AFTD
- LAFT
- AWS



Lamella collecting funnel LAFTBE, double wall

- Movable
- Attached to tool (mould) or worktops
- Tubes are guided through double-wall lamellas
- Material heavily flammable, slotted

Benefits:

- Easy fast and variable assembly due to special magnets
- Gentle and safe removal of parts
- Reduction of rejects through the systematic further conveyance of parts onto a conveyor belt or into a container
- Cleaner parts and cleaner machine environment through systematic collection
- Version taking into account the machine and product composition

Side safety curtain

- Version 1
- Version 2

Butterfly curtain

- LAS
- AFR

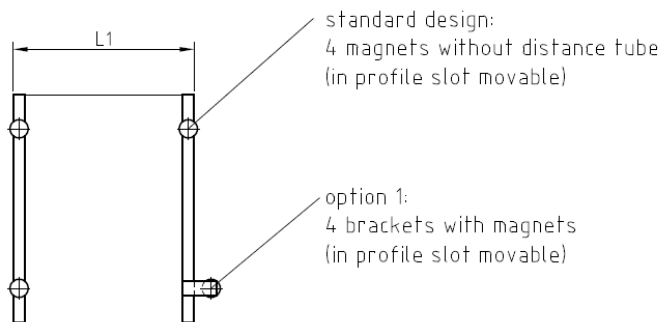
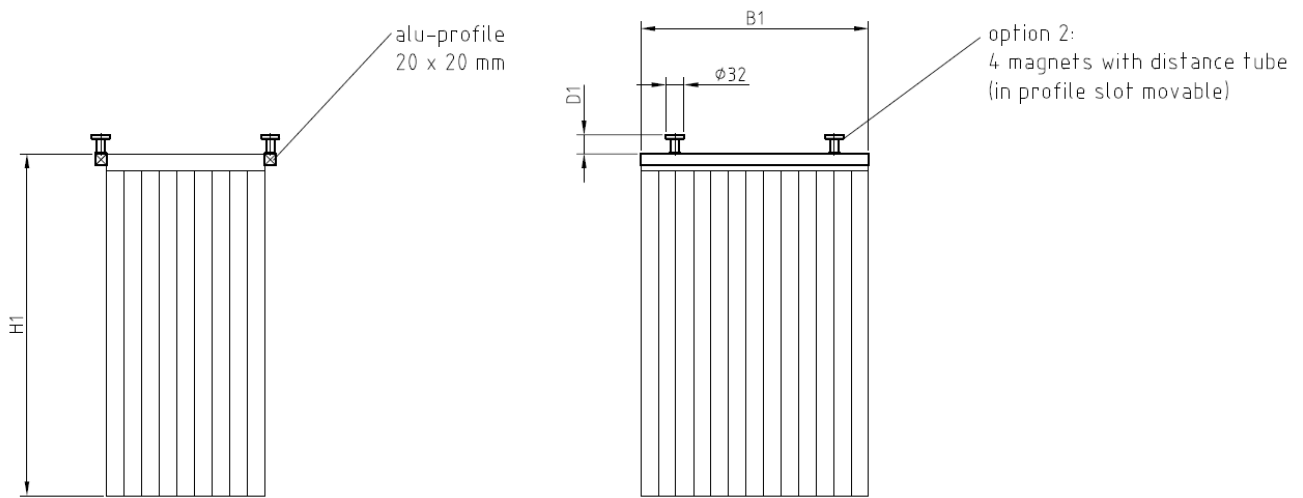
Cross bar cover

Number	W1 [mm]	L1 [mm]	H1 [mm]
250	250	500	151.250.250.500
300	300	500	151.300.300.500
400	400	500	151.400.400.500
500	500	500	151.500.500.500
600	600	500	151.600.600.500
700	700	500	151.700.700.500

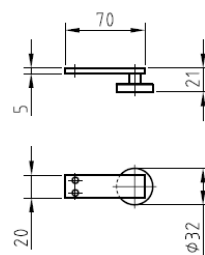
Mounting with 4 magnets (Ø 32 mm) without spacer tube

Inquiry: lamella funnel type LAFTBE, double wall

Company:	_____	Contact person:	_____
Street:	_____	Phone:	_____
ZIP/City:	_____	E-mail:	_____
Machine no:	_____	Max. product dimensions:	_____
Tool no:	_____	(L x W x H) in mm	_____
		Required quantity:	_____ Pieces



dimension of bracket:



Width	B1 =	mm
Distance between lower edge tool and upper edge aluminium profile (magnetic height 8 mm)	D1 =	mm
Height	H1 =	mm
Maximum mould aperture distance	L1 =	mm

Optional:

- 4 brackets with magnets (Ø 32 mm)
- Special shape for brackets (please enclose diagram with dimensions)
- 4 magnets (Ø 32 mm) with spacer tube

Collecting funnel

- AFTBE, straight
- AFTBE, diagonal
- AFTBE, diagonal,
90° turned
- AFTBE, duo
- AFTBE, duo, 90° turned
- LAFTE, double wall

AFT

AFTD

LAFTE

AWS

Side safety curtain

Version 1

Version 2

Butterfly curtain

LAS

AFR

Cross bar cover



Collecting funnel AFT with fixed frame

- Fixed
- Fixed to rigid machine base
- Straight runout for the ejection of parts, for example a conveyor or a container under the tool
- Optional: Baffler, pad

Benefits:

- Easy fast and variable assembly due to special magnets
- Gentle and safe removal of parts
- Reduction of rejects through the systematic further conveyance of parts onto a conveyor belt or into a container
- Cleaner parts and cleaner machine environment through systematic collection
- Version taking into account the machine

W1 [mm]	W2 [mm]	L1 [mm]	L2 [mm]	H1 [mm]	Version		Chain length for K [mm]	Article number
					K	T		
300	100	300	100	450			200	123.300.300.450
330	100	330	100	450			200	123.330.330.450
400	150	440	150	450			200	123.400.440.450
500	200	540	200	450			200	123.500.540.450
600	200	640	200	450			200	123.600.640.450
700	250	740	250	450			200	123.700.740.450

Version K: Mounting with 4 equally long chains and 4 magnets (Ø 25 mm or Ø 32 mm)

Version T: Mounting with 4 brackets and 4 magnets (Ø 32 mm)

Inquiry: collecting funnel type AFT

Company: _____

Contact person: _____

Street: _____

Phone: _____

ZIP/City: _____

E-mail: _____

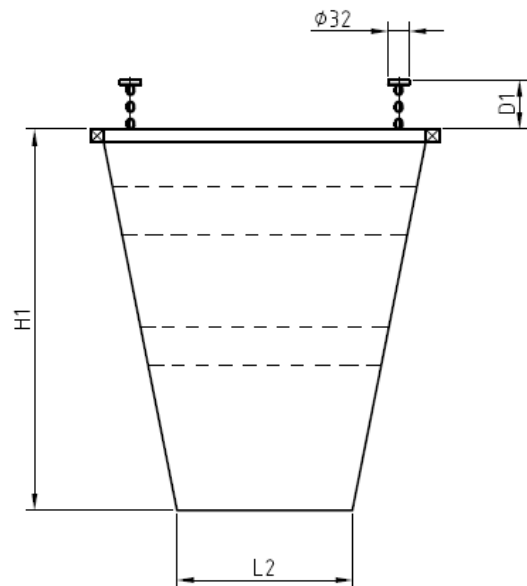
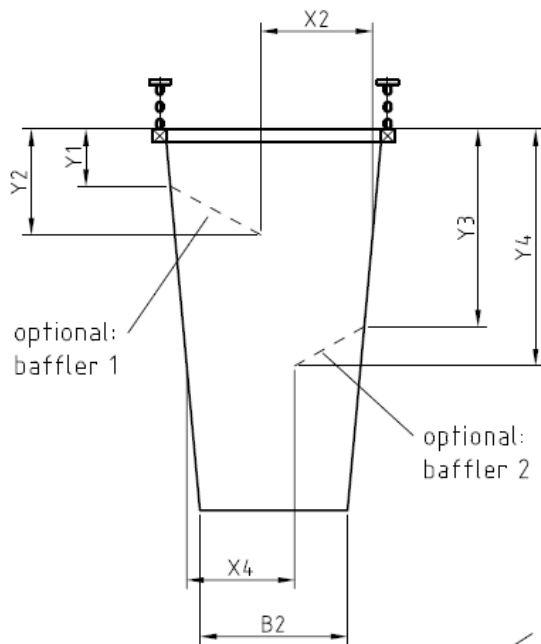
Machine no: _____

Max. product dimensions: _____

Tool no: _____

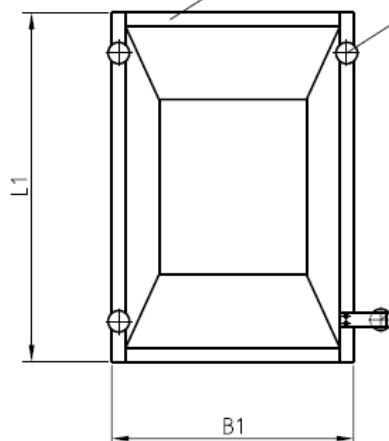
(L x W x H) in mm _____

Required quantity: _____ Pieces



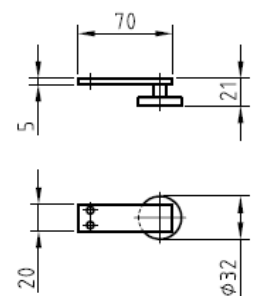
alu frame
profile 20 x 20 mm

version K:
4 magnets with equal chains
(in profile slot movable)



version T:
4 brackets with magnets
(in profile slot movable)

dimension of bracket:



Inquiry: collecting funnel type AFT

Width of frame	B1 =	mm
Width runout	B2 =	mm
Length of frame	L1 =	mm
Length of runout	L2 =	mm
For version K: Distance between lower edge of tool and top edge of aluminium profile	D1 =	mm
Height of funnel	H1 =	mm

Optional:

Start height baffle 1	Y1 =	mm
End height baffle 1	Y2 =	mm
Aperture at baffle 1	X2 =	mm
Start height baffle 2	Y3 =	mm
End height baffle 2	Y4 =	mm
Aperture at baffle 2	X4 =	mm

- Version K: 4 chains with magnets (\varnothing 32 mm)
- Version T: 4 Brackets with magnets (\varnothing 32 mm)
- Special shape for brackets (please enclose diagram with dimensions)
- Pad (Please mark on diagram)

Material-Selection: FM100.001 (antistatic) FM100.003 (static blue) FM100.005 (antist. + FDA)
 FM100.002 (static silver) FM100.004 (Kevlar) FM100.006 (Glamux)



Double funnel AFTD with fixed frame

- Fixed
- Fixed to rigid machine base
- Diagonal runout for the ejection of parts, for example a conveyor or a container under the tool
- Optional: Baffler, pad

Benefits:

- Easy fast and variable assembly due to special magnets
- Gentle and safe removal of parts
- Reduction of rejects through the systematic further conveyance of parts onto a conveyor belt or into a container
- Cleaner parts and cleaner machine environment through systematic collection
- Version taking into account the machine and product composition

Collecting funnel

- AFTBE, straight
- AFTBE, diagonal
- AFTBE, diagonal, 90° turned
- AFTBE, duo
- AFTBE, duo, 90° turned
- LAFTBE, double wall

AFT

AFTD

LAFT

AWS

Side safety curtain

Version 1

Version 2

Butterfly curtain

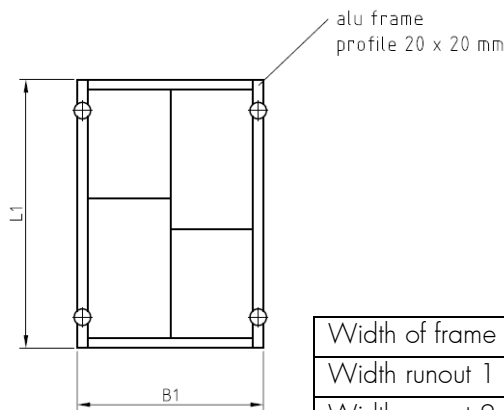
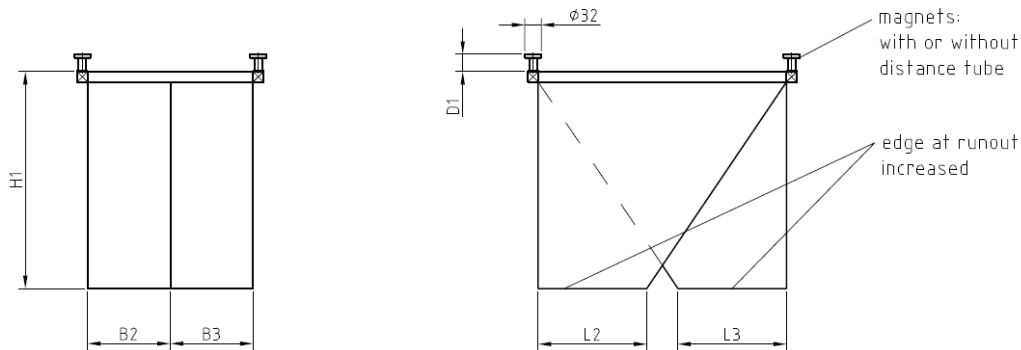
LAS

AFR

Cross bar cover

Inquiry: double funnel type AFTD

Company:	_____	Contact person:	_____
Street:	_____	Phone:	_____
ZIP/City:	_____	E-mail:	_____
Machine no:	_____	Max. product dimensions:	_____
Tool no:	_____	(L x W x H) in mm	_____
		Required quantity:	_____ Pieces



Width of frame (W2 + B3 + 40 mm)	B1 =	mm
Width runout 1	B2 =	mm
Width runout 2	B3 =	mm
Length of frame	L1 =	mm
Length of runout 1	L2 =	mm
Length of runout 2	L3 =	mm
Distance between lower edge of tool and top edge of aluminium profile (magnet height 8 mm)	D1 =	mm
Height of funnel	H1 =	mm

Pad (Please mark on diagram)

Material-Selection: FM100.001 (antistatic) FM100.003 (static blue) FM100.005 (antist. + FDA)

FM100.002 (static silver) FM100.004 (Kevlar) FM100.006 (Glamux)



Lamella collecting funnel LAFT, double wall

- Fixed
- Fixed to rigid machine base
- Straight runout for the ejection of parts, for example a conveyor or a container under the tool
- Tubes are guided through double-wall lamellas
- Material heavily flammable, slotted

Benefits:

- Easy fast and variable assembly due to special magnets
- Gentle and safe removal of parts
- Reduction of rejects through the systematic further conveyance of parts onto a conveyor belt or into a container
- Cleaner parts and cleaner machine environment through systematic collection
- Version taking into account the machine

W1 [mm]	L1 [mm]	H1 [mm]	Article number
250	250	500	152.250.250.500
300	300	500	152.300.300.500
400	400	500	152.400.400.500
500	500	500	152.500.500.500
600	600	500	152.600.600.500
700	700	500	152.700.700.500

Mounting with 4 magnets (Ø 32 mm) without spacer tube

Collecting funnel

- AFTBE, straight
- AFTBE, diagonal
- AFTBE, diagonal, 90° turned
- AFTBE, duo
- AFTBE, duo, 90° turned
- LAFTBE, double wall

AFT

AFTD

LAFT

AWS

Side safety curtain

Version 1

Version 2

Butterfly curtain

LAS

AFR

Cross bar cover

Inquiry: lamella collecting funnel type LAFT

Company: _____ Contact person: _____

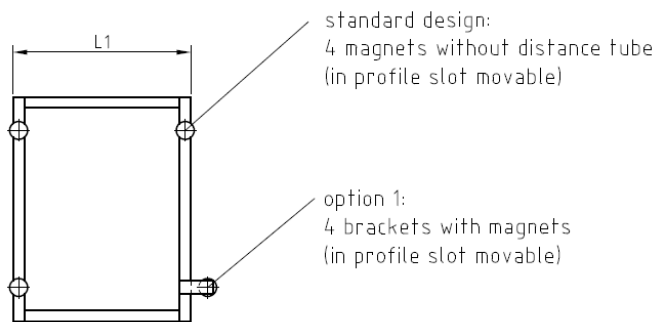
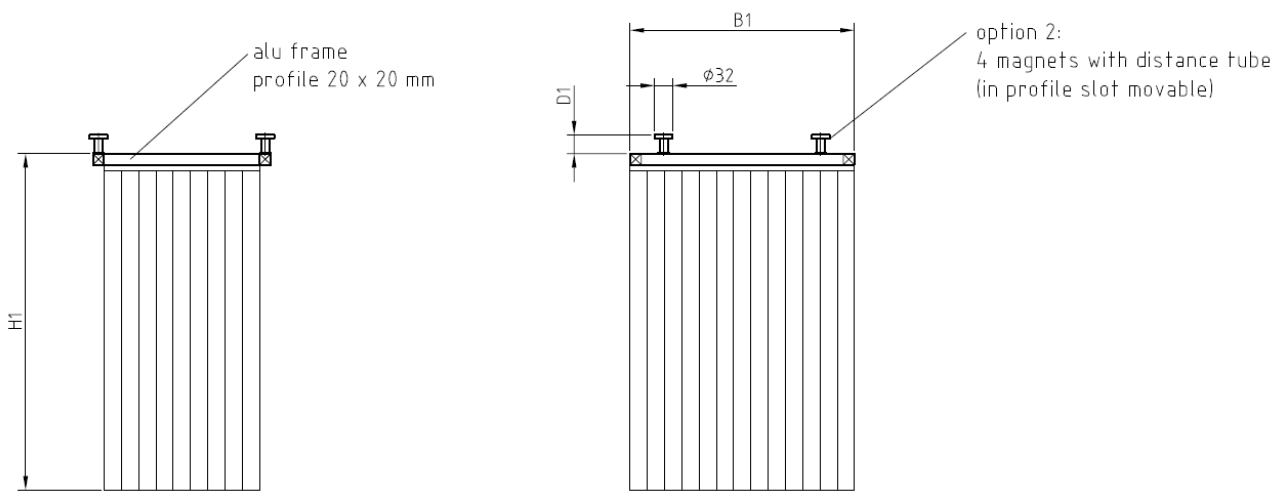
Street: _____ Phone: _____

ZIP/City: _____ E-mail: _____

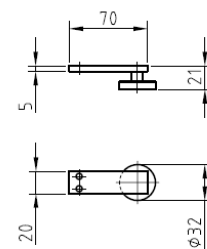
Machine no: _____ Max. product dimensions: _____

Tool no: _____ (L x W x H) in mm _____

Required quantity: _____ Pieces



dimension of bracket:



Width	B1 =	mm
Distance between lower edge tool and upper edge aluminium profile (magnetic height 8 mm)	D1 =	mm
Height	H1 =	mm
Length	L1 =	mm

Optional:

- 4 Brackets with magnets (Ø 32 mm)
- Special shape for brackets (please enclose diagram with dimensions)
- 4 magnets (Ø 32 mm) with spacer tube



Features:

- Light metal frame made of aluminium profile
- Easy assembly with chains and special magnets on unmovable machine frames
- Material in different versions (temperature-resistant, anti-static, ...)
- Movable, movable with mould or fixed versions
- Application-sizes and versions (tool or mould geometry, aperture distances, hose connections, product composition, ...)

Benefits:

- Easy fast and variable assembly due to special chains and special magnets
- Gentle and safe removal of parts
- Reduction of rejects through the systematic further conveyance of parts onto a conveyor belt or into a container
- Cleaner parts and cleaner machine environment through systematic collection
- Version taking into account the machine and product composition

- W1 [mm]	- L1 [mm]	- H1 [mm]	- Chain length		Article number
			- H2 [mm]	- H2 [mm]	
300	750	150	400	300	130.300.750.150
450	750	150	400	300	130.450.750.150
540	750	150	400	300	130.540.750.150
540	800	150	400	300	130.540.800.150
540	850	200	400	300	130.540.850.200
540	900	150	400	300	130.540.900.200
540	920	200	400	300	130.540.920.200
600	1000	200	400	300	130.600.1000.200
800	1000	250	400	300	130.800.1000.250
600	1200	250	400	300	130.600.1200.250
800	1200	250	400	300	130.800.1200.250
600	1300	250	400	300	130.600.1300.250
800	1300	250	400	300	130.800.1300.250

The mounting material (chains with magnets) is not included and must be ordered separately.
(Mounting material Art. No.: 111.000.080)

Collecting funnel

- AFTBE, straight
- AFTBE, diagonal
- AFTBE, diagonal, 90° turned
- AFTBE, duo
- AFTBE, duo, 90° turned
- LAFTBE, double wall
- AFT

AFTD

LAFT

AWS

Side safety curtain

Version 1

Version 2

Butterfly curtain

LAS

AFR

Cross bar cover

Inquiry: Collecting trough type AWS

Company: _____

Contact person: _____

Street: _____

Phone: _____

ZIP/City: _____

E-mail: _____

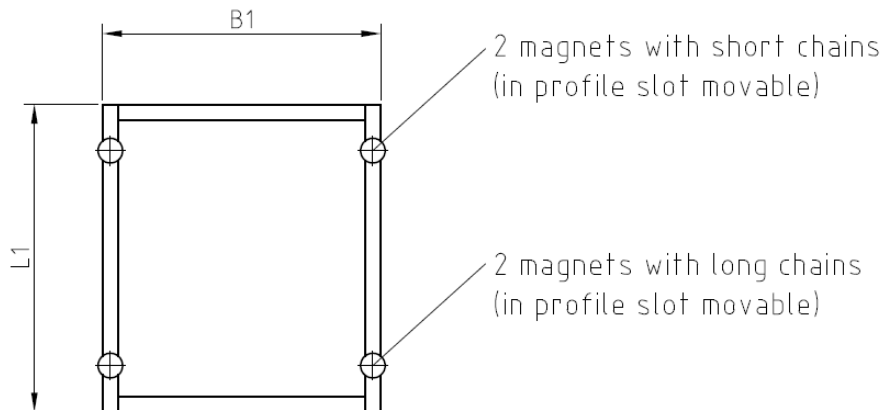
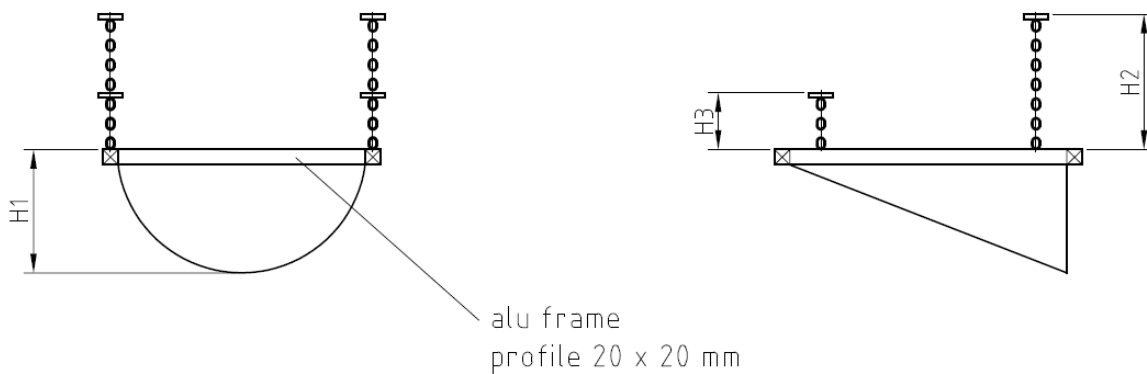
Machine no: _____

Max. product dimensions: _____

Tool no: _____

(L x W x H) in mm _____

Required quantity: _____ Pieces



Width of frame	B1 =	mm
Length of frame	L1 =	mm
Height runout	H1 =	mm

<input type="checkbox"/>	Magnets with long chain (2 pieces)	H2 =	mm
--------------------------	------------------------------------	------	----

<input type="checkbox"/>	Magnets with short chain (2 pieces)	H3 =	mm
--------------------------	-------------------------------------	------	----

- Material-Selection: FM100.001 (antistatic) FM100.003 (static blue) FM100.005 (antist. + FDA)
- FM100.002 (static silver) FM100.004 (Kevlar) FM100.006 (Glamux)